

SHOPPE OBJECT

WINTER 2023 | FEBRUARY 5-7 | PIER 36



UP NEXT

NYC SHOW | AUGUST 13-15, 2023
HIGH POINT MARKET | OCTOBER 2023

SHOPPEOBJECT.COM | @SHOPPEOBJECT

WELCOME TO YOUR WORLD

It's been four and a half years since we started this thing. Embarking on this, our 8th in-person show, has been filled with all of the love and hope and jitters and pride and forward vision and total unpredictability and “*can we, should we?*” and “*yes we can!*” of that very first edition. We are much bigger, yes — more than six times the size of that first event and 30% larger than the record breaking summer of 2022. Bigger aside, we are, much more importantly, better. SO much better. Better because of you.

You are the hard-working merchants, designers, creators, buyers and sellers, entrepreneurial thinkers, rule breakers, risk takers, tastemakers, multi-taskers and shining examples of humanity that built this growing community. You did this. You made the move. You wrote it, cooked it, baked it, bottled it, cut it, sewed it, ran it, drove it, planted it, watered it, cared for it, grew it, and showed up for it. And we thank you.

Welcome to your world. Look at what you've done. It is you. It has always been you.

BRAND DIRECTORY

R - RIVERSIDE PAVILION | C - CITYSIDE PAVILION

&SUNDAY <i>Karen Alweil Studio</i>	R E322	ARTBOOK D.A.P. <i>Aesthetic Movement</i>	R A111	CAROLYN KEYS	R C207	DOG BY DR LISA <i>Karen Alweil Studio</i>	R E322
11.11 / ELEVEN ELEVEN	C K315	ARTHEARTS <i>Karen Alweil Studio</i>	R E322	CAROLYN SUZUKI STUDIO	R C109	DONA	R NOURISH
2ND PALETTE	R G301	ASSOULINE	C K207	CARTER + ROSE	R B310	DOT AND ARMY	R F214
54CELSIUS	C K217	ATUM FRAGRANCE	R E11	CASKATA	R F208	DOVE AND DONKEY	R G214
8.6.4	R B301	AUTUMN SONATA	R H306	CAST OF STONES <i>Karen Alweil Studio</i>	R E322	DRUTHERS <i>Nutty Rice</i>	C M213
A KIDS COMPANY ABOUT	R C310	AVENIDA HOME	R E202	CATH•S	R F203	DUNE SUNCARE <i>Van Pelt Agency</i>	R G221
AARKE <i>The Foundation</i>	R E105	AZULINA HOME	C L308	CAVALLINI & CO.	R C113	E. FRANCES PAPER	R C106
ABEL	R E17	BABY CATS OF CALIFORNIA	R D325	CENTINELLE	R G218	EARTH & NEST <i>Aesthetic Movement</i>	R A105
ACTUALLY CURIOUS	C K2	BAGSINPROGRESS	R C301	CEREMONIA	C J309	EARTH ELEMENTS SOAPWORKS <i>BLMAI</i>	R G311
ADADA <i>Karen Alweil Studio</i>	R E322	BALTIC CLUB	R E308	CHABI CHIC <i>Global Artisan Project</i>	R A320	EAST END PRESS	R D209
ADERIA <i>Showcase Japan</i>	R A319	BAN INOUE <i>Showcase Japan</i>	R A319	CHAN LUU	R G225	EBB & FLOW	R A205
ADJOURN TEAHOUSE <i>BLMAI</i>	R C311	BANWOOD	R E301	CHARLIE SPROUT	R C303	ECO KIDS	R F302
ADORN	R A207	BARE HANDS	R NOURISH	CHARVET EDITIONS	R E303	ECUVO <i>Showcase Japan</i>	R A319
AESHAANE BY SHILP	R G104	BARLOGA STUDIOS	R A310	CHELSEY GREENE STUDIO	R E5	EIGHT THOUSAND MILES	R D214
AESTHETIC MOVEMENT	R A100	BATIQUA <i>BLMAI</i>	R G101	CHEQUESSETT CHOCOLATE	R F217	ELEMENTS/JILL SCHWARTZ	R C214
AFRICAN JACQUARD	C K201	BE [...] MY FRIEND	R G302	CHIKAHISA STUDIO	R C218	ELEPHANT MOON <i>Karen Alweil Studio</i>	R E322
AGRICOLA MARAVIGLIA	R NOURISH	BEACH HARE / HATS	R G216	CHILEWICH <i>Aesthetic Movement</i>	R A200	ELIA <i>Karen Alweil Studio</i>	R E322
AID TO ARTISANS	R A217	BEEHIVE HANDMADE	R D316	CHRISTOPHE POURNY STUDIO	R G205	EMILIE SHAPIRO STUDIO	R C225
AKILA EYEWEAR	R F109	BELLA CUCINA	R F200	CHUAN'S PROMISE	R NOURISH	ESCUYER	R E302
ALAMWAR	R E207	BELLROY <i>Nutty Rice</i>	C M213	CIVIL ALCHEMY	R B316	ETÚHOME	R A214
ALEXANDRA VON FURSTENBERG	R D324	BIBI HANUM <i>Global Artisan Project</i>	R A320	CLOUDNOLA	R E310	EVANGELINE LINENS	C J311
ALFRED LANE	R B311	BIG HEART TEA CO.	R NOURISH	CMYK&MORE	R B214	EVE & NICO <i>BLMAI</i>	R C215
ALIMROSE <i>Karen Alweil Studio</i>	R E322	BITTERS CO.	R H208	COCO CHOCOLATIER <i>Aesthetic Movement</i>	R A103	EVEN KEEL	R B304
ALKEMIE JEWELRY	R C201	BLABLA <i>Karen Alweil Studio</i>	R E322	CODA SONG <i>Karen Alweil Studio</i>	R E322	EVERGREEN SUMMER	R D307
ALLEM STUDIO	R C202	BLACK DAHLIA <i>Karen Alweil Studio</i>	R E322	COLLECTIVE HUB <i>Karen Alweil Studio</i>	R E322	EXACLAIR - CLAIREFONTAINE RHODIA	C J303
ALPHABET LEGENDS <i>Karen Alweil Studio</i>	R E322	BLESS MY FUNK HOME	C K216	COMMONWEALTH PROVISIONS	R B315	FFERONE	R H311
ALTR SOAPS	R NOURISH	BLNCD <i>Karen Alweil Studio</i>	R E322	COTTON CLARA	R D207	FABLERUNE	R C205
AMEICO	R F321	BLOCK DESIGN	R E304	CRAFT BOAT	R E321	FAR WEST	R E311
AMERICAN DESIGN CLUB	C K303	BLOMUS	C J312	CRAIGHILL	C K313	FARMSTEADY	C J204
AMERICAN TRENCH	C K204	BLUMA PROJECT	R G304	CROW & CANARY	R C110	FAWNE	R F218
ANAYA HOME	R G105	BLUME	R NOURISH	CROW CANYON HOME& BORN	C J215	FCTRY	R F219
ANCHAL	R E212	BOHEME FRAGRANCES	C K314	CUSHENDALE <i>Made In Ireland</i>	R E108	FER A CHEVAL - SAVON DE MARSEILLE	R G109
ANDRAAB	R G223	BOMSHBEE	C J214	D.A.R. PROYECTOS	R E13	FIELD NOTES BRAND	R E318
ANDREW IANNAZZI	R A213	BOTANICA	R A219	DAILY CANDY <i>Karen Alweil Studio</i>	R E322	FILLING SPACES	C M212
ANDY KOU PAL	R F313	BRITISH COLOUR STANDARD	C M207	DAIYO <i>Showcase Japan</i>	R A319	FINN	R A313
ANECDOTE CANDLES	R H204	BROOKLYN CANDLE STUDIO	R C321	DAVID AUBREY JEWELRY	R B319	FIONA WALKER ENGLAND	R E322
ANHAD	R B302	BY ALEJANDRA DESIGN	R B220	DAVID ZWIRNER BOOKS	R E206	<i>Karen Alweil Studio</i>	
APERTURE	R G315	BYBBA <i>Magnify Sales Group</i>	C K304	DAVIE OCHO CANDLE CO.	R H214	FLAMINGO <i>Showcase Japan</i>	R A319
APOTHIA <i>Karen Alweil Studio</i>	R E322	CALHOUN & CO.	R D201	DAYS OF AUGUST	R E7	FLORAMYE <i>Karen Alweil Studio</i>	R E322
APPARIS <i>Karen Alweil Studio</i>	R E322	CAMINITO	R D220	DEAR ANNABELLE	R C209	FOG LINEN WORK	C M217
APPLY STICKERS	C J205	CANDYLAB TOYS	R E219	DEAR BENI	R D210	FOR SEA AND OATS	R NOURISH
ARCHIVIST	R C103	CANVAS HOME	R E201	DEAR BOTANICS	R NOURISH	FRANCES GREY HATS <i>BLMAI</i>	R C210
AREAWARE	R E109	CÂPÂ JEWELRY	R E9	DEBBIE FISHER	R E16	FREDERICKS & MAE <i>Aesthetic Movement</i>	R C102
ARK COLOUR DESIGN	C L305	CAPRA DESIGNS	R F213	DEBORAH RHODES	R F202	FRESHIE & ZERO	R E3
		CAPTAIN BLANKENSHIP <i>Van Pelt Agency</i>	R G221	DEEP ROOTS BOTANICAL GOODS	R NOURISH	FS OBJECTS BY FORT STANDARD	R F319
				DESEDA	C K206	FURBISH STUDIO	C L215
				DISTANT ECHO	R H308	GESTURES	R NOURISH
				DJECO	R C306		

CONTINUED...

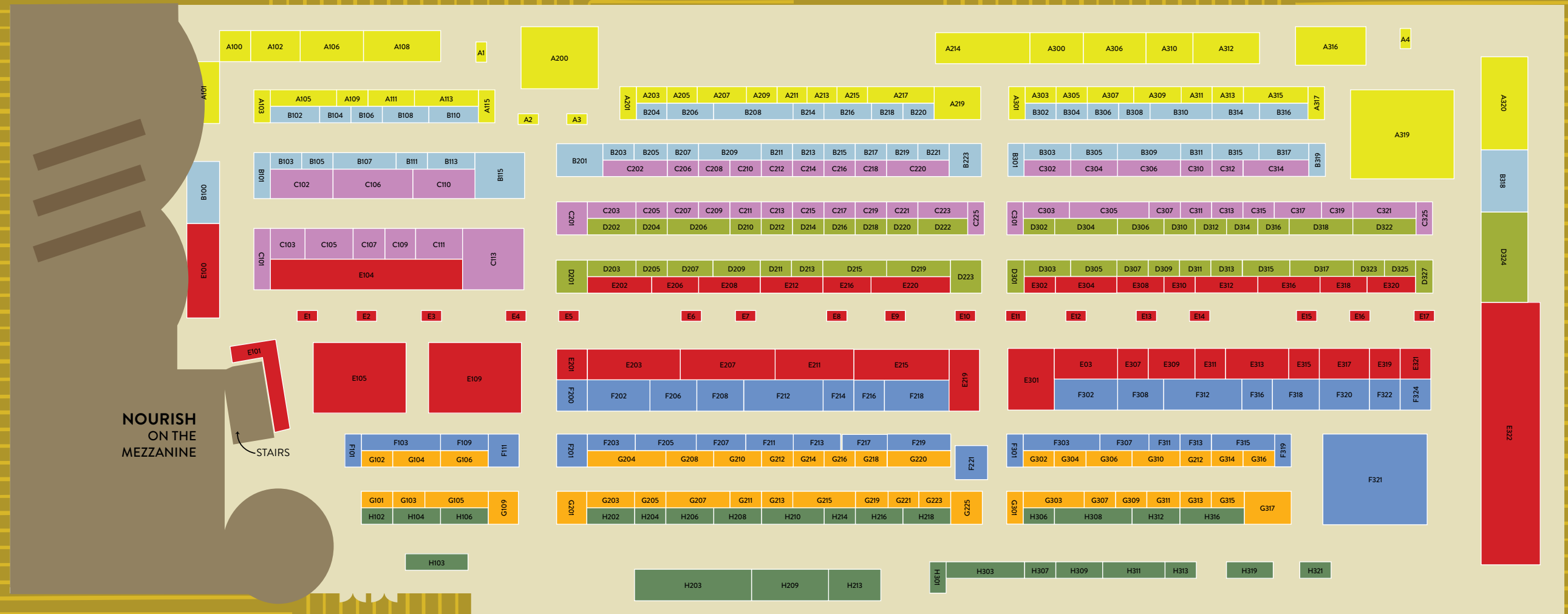
R - RIVERSIDE PAVILION | C - CITYSIDE PAVILION

GABRIEL + SIMONE <i>Karen Alweil Studio</i>	R E322	INJIRI <i>Aesthetic Movement</i>	R B101	LAGUIOLE CLAUDE DOZORME CUTLERY	R F206	MIA MÉLANGE	C J203
GARY BODKER DESIGNS	R F207	INOUI EDITIONS	C M304	LAST CHANCE TEXTILES	R B317	MICHAEL WAINWRIGHT	R F205
GEOMETRY <i>Karen Alweil Studio</i>	R E322	INSPIRED PERU	R C314	LATERAL OBJECTS	R E208	MIHO UNEXPECTED THINGS	R H319
GESTALTEN	R G102	INTIEARTH	R H202	LAUREN HB STUDIO	R D302	MIMIPAMBO <i>BLMAI</i>	R G212
GHARYAN STONEWARE & DECORATION	R A209	ISATOPIA	R C312	LETTERFOLK <i>Pattern Brands</i>	C K301	MINIWARE	R D212
GIR <i>Pattern Brands</i>	C K301	ISOBEL & CLEO	R C302	LEUCHTTURM1917 <i>Lighthouse Publications</i>	R H203	MINORI	R NOURISH
GJENMI JEWELRY	R E315	IT IS WELL L.A.	R B223	LIGHHOUSE PUBLICATIONS	R H203	MISC. GOODS CO.	C L219
GLOBAL AFFAIRS	R E216	ITZA WOOD	R H307	LIIS <i>Van Pelt Agency</i>	R G221	MÖBIUS KERAMIKK	R G314
GLOBAL ARTISAN PROJECT	R A320	IXÖQ	R G309	LIKHÂ	R B303	MOD + JO	R B306
GODDEX	R B314	JANGNEUS	R D314	LILY JULIET	R F212	MODERN SPROUT	R F315
GOLDIE HOME	R E8	JASON MARKK	R G201	LINEN TALES	C L314	MOHINDERS	R A301
GOLDIE'S NATURAL BEAUTY	R NOURISH	JEFFERSON HAYMAN STUDIO	R B221	LINHART NYC	R NOURISH	MOISMONT <i>Aesthetic Movement</i>	R A101
GOOSE GREASE	R E4	JENNI EARLE	R D216	LIO&LINN	R A303	MOLLOY & SONS <i>Made In Ireland</i>	R E104
GRAF LANTZ	R A316	JENNIFER SLATTERY <i>Made In Ireland</i>	R E106	LISA B.	C L307	MOMA <i>Aesthetic Movement</i>	R A106
GRAPHIC IMAGE <i>Aesthetic Movement</i>	R A102	JENNY WALKER	R E1	LIVING THING	R D204	MONSERAT DE LUCCA	R E313
GREENPACHA	C K5	JILL & ALLY <i>Karen Alweil Studio</i>	R E322	LOHN	R A3	MOOMOO DESIGNS	C M303
GRISAL <i>Showcase Japan</i>	R A319	JINSOON <i>Van Pelt Agency</i>	R G221	LOOK OPTIC	R D303	MORIHATA INTERNATIONAL	C L311
GRY MATTR	C J308	JITANA	R G203	LOOM.IST	R F316	MOTH & MYTH	R C319
HALF UNITED <i>Karen Alweil Studio</i>	R E322	JK ADAMS	R E307	LOTTA JANSBOTTER	R D301	MOTHER SHRUB	R NOURISH
HANGAI MOUNTAIN TEXTILES	R E312	JOE CARIATI	R H210	LOVAT&GREEN	R D304	MR. BODDINGTON'S STUDIO	R B213
HAPPY PLACE <i>Nutty Rice</i>	C M213	JOHANNA HOWARD HOME	R G303	LULU DESIGNS	R F320	MULXIPLY	R G220
HAPTIC LAB	R F301	JOSHI	R C223	LUND LONDON	R F103	MUNGO	R H216
HARAPPA <i>Showcase Japan</i>	R A319	K STUDIO	R D205	LUXE DOMINOES	C J301	MURPHY & DAUGHTERS <i>Karen Alweil Studio</i>	R E322
HARLEM CANDLE CO.	R A4	K/LLER COLLECTION JEWELRY	R H321	MAAT LIVING <i>Karen Alweil Studio</i>	R E322	MUZALUCI	R F211
HARPERCOLLINS PUBLISHERS	R C111	KALEIDADOPE	R D211	MACON&LESQUOY	R A215	MY BOB, USE YOUR HEAD!	R G215
HEILBRON HERBS	R NOURISH	KAMAWANU <i>Showcase Japan</i>	R A319	MADE COZY	R B217	MYUM THE VEGGY TOYS	C K3
HELEN ROUND	R D315	KAMI NO MILLE-FEUILLE <i>Showcase Japan</i>	R A319	MADE IN IRELAND	R E104-110	MYWALIT	R A309
HELLEN VAN BERKEL HEARTMADEPRINTS	R A315	KAREN ALWEIL STUDIO	R E322	MADISON + GREEN	R C216	NATE COTTERMAN GLASS	R A307
HELMSIE <i>Karen Alweil Studio</i>	R E322	KAZI ALL ACROSS AFRICA	R A312	MAGICLINEN	R F312	NEEM	C L301
HEMLOCK GOODS	R C211	KEMPTON & CO	R E317	MAGNIFY SALES GROUP	C K304	NEIGHBORGOODS	R D202
HILO SAGRADO <i>Global Artisan Project</i>	R A320	KENTO HASHIGUCHI <i>Showcase Japan</i>	R A319	MAILEG	R E215	NISHIGUCHI KUTSUSHITA <i>Showcase Japan</i>	R A319
HIPSTERKID	R F219	KERRI ROSENTHAL	R E309	MAKAUA	C L310	NIWAKI	R C317
HISO	R A306	KIKO+ & GG* <i>Showcase Japan</i>	R A319	MALA THE BRAND <i>Magnify Sales Group</i>	C K304	NOA LUX <i>BLMAI</i>	R B215
HOMA STUDIOS	R A203	KIN & CARE	R F218	MAMO	R B203	NOAT	C K208
HOME & LOFT	R C219	KITO <i>Showcase Japan</i>	R A319	MARK KREBS	R A211	NOBLE FIBRE	C M310
HOME OF THE BRAVE <i>Aesthetic Movement</i>	R B102	KNOT & BOW	R C304	MARUMITSU POTERIE <i>Showcase Japan</i>	R A319	NOTED BY COPINE	R C315
HOT COOL TOKYO	R G313	KOFF	C L303	MASHA TEA	R NOURISH	NOUSAKU <i>Showcase Japan</i>	R A319
HOUSE NO. 23 <i>Karen Alweil Studio</i>	R E322	KOLLAB <i>Karen Alweil Studio</i>	R E322	MATA	R NOURISH	NUDE <i>Karen Alweil Studio</i>	R E322
IL BUCO VITA	R F322	KOTT	R E2	MATCHDADDY <i>Karen Alweil Studio</i>	R E322	NUTTY RICE SHOWROOM	C M213
ILEX STUDIO	C J207	KURAMA REIKI <i>Showcase Japan</i>	R A319	MATER SOAP	C K1	O MY BAG	C M308
IMMODEST COTTON <i>Aesthetic Movement</i>	R B106	KVD NYC	R F101	MATT KOLBRENER GLASS	C K205	O.B. DESIGNS <i>Karen Alweil Studio</i>	R E322
INDEGO AFRICA	R D323	KYO WAZARASHI MENSYA <i>Showcase Japan</i>	R A319	MAYRON'S GOODS + SUPPLY	R D305	OATS & RICE	R G210
		LISSOY	C M302	MCCONNELL <i>Made In Ireland</i>	R E110	OCTAEVO	C J304
		LA CASA	R D218	MCREA'S CANDIES	R D311	OF UNUSUAL KIND	R B206
				MEG COHEN	R C220	OHH DEER	R C305
				MELANIE ABRANTES DESIGNS	R G208	OLIVE & LOOM	R F218
				MELISSA DE LA FUENTE	C K4	OLIVE & OLDE'S	R A317
				MERCADO GLOBAL	R B305	OLIVER PLUFF & CO	R D313
				MI COCINA	R F324	OMY	R D306
						ONSEN <i>Pattern Brands</i>	C K301

STILL CONTINUED...

R - RIVERSIDE PAVILION | C - CITYSIDE PAVILION

OPEN SEA DESIGN CO.	R G310	REISFIELDS	R C213	SOPHIE LOU JACOBSEN	C M211	TULUSA	R B108
OPEN SPACES <i>Pattern Brands</i>	C K301	RIFLE PAPER CO.	C J209	SORTJOY	C J219	TWEE MADE FOR LITTLE HANDS	R D213
ORIGINAL DUCKHEAD	R F307	RIVER SONG	C M307	SOSHE <i>Van Pelt Agency</i>	R G221	TWENTY TWO WEST	R G219
OROPOPO	R H309	ROAM	R B113	SOUL SPACE	C M311	UBUNTU LIFE	R C217
ORRIS LONDON	R E15	ROGUE PAQ LUXURY CANNABIS ACCESSORIES	R E10	SPENCER DEVINE	R A311	UGLYBOOKS	R F221
OIJIGAMA <i>Showcase Japan</i>	R A319	ROOM SHOP	R E315	SQUARE TRADE GOODS CO. <i>Aesthetic Movement</i>	R B103	UNCLE GOOSE	R F303
OXUM NYC	R B219	ROOMYTOWN	R E220	STEAMERY <i>The Foundation</i>	R E105	UNDER THE BOUGH	R A300
OYOY LIVING DESIGN	R H316	ROSE + CO. CANDLEMAKERS	R G307	STONE HOLLOW FARMSTEAD	R H213	UNICORN SNOT	R F219
P.F. CANDLE CO.	C K306	RUMBLE CARDS	R C313	STUDIO CARTA	C M216	UNIQUITY	R B115
PALERMO BODY	R A201	RUSTIC LOOM	R C212	STYLE UNION HOME	C J218	UNWRP	R D312
PAPIER	R C105	SABAN GLASS	C L213	SUCK UK	R B208	UWP LUXE	R D318
PAPIER TIGRE	R G316	SAPAHN	R C206	SUGA	R D310	VAN PELT AGENCY	R G221
PAPPELINA	R B318	SARALAM <i>Showcase Japan</i>	R A319	SUGAR TAYLOR, CO. <i>BLMAI</i>	C J201	VERLOOP KNITS	R A113
PARROTFISH	R NOURISH	SARDEL	C L211	SWEET BELLA	R E203	VESPER COCKTAILS / BISOU BAR <i>Magnify Sales Group</i>	C K304
PATENT OF HEART	R B308	SATOMI STUDIO	C M307	SZADE	R E315	VOYAGE ET CIE	R A115
PATTERN BRANDS	C K301	SAVANNA BASKETS <i>Global Artisan Project</i>	R A320	TOASTIES	R H312	VVYOM BY SHUCHITA	R E211
PAUME	R NOURISH	SAVED NY	R E101	T.S. PINK	R E6	WALLACE SEWELL	C J213
PETRA BOASE	R C107	SAYSO	R NOURISH	TAILORED UNION	R C221	WANDERING BUD	R G103
PEUGEOT	R F216	SCARLETTE ATELIERS <i>Aesthetic Movement</i>	R B104	TAKADA TAWASHI <i>Showcase Japan</i>	R A319	WATERBODY	R NOURISH
PHAIDON	R D223	SEE DESIGN	R B309	TAKAZAWA CANDLE <i>Showcase Japan</i>	R A319	WAYIL BY ALGODONES MAYAS	R B218
PHIL GAUTREAU WOOD DESIGN	R H218	SEMIKOLON <i>Lighthouse Publications</i>	R H203	TATTLY	R D317	WE MIGHT BE TINY <i>Karen Alweil Studio</i>	R E322
PIECEWORK PUZZLES	R D327	SEMPLE	R F201	TEA WITH TAE	R B111	WE THE WILD PLANT CARE	R C325
PILGRIMWATERS	C L302	SERENDIPITY DELHI	C J305	TENN PRAIRIE <i>Aesthetic Movement</i>	R B105	WERKSHOPPE	R D222
PLECO <i>Showcase Japan</i>	R A319	SGHR SUGAHARA <i>Showcase Japan</i>	R A319	TERMINAL B <i>BLMAI</i>	C M314	WHITE + WARREN	R F308
PLOOM	R B204	SGW LAB	R A2	TERRAFIRMA CERAMICS	R B201	WOLL	R B211
POINTED LEAF PRESS <i>Aesthetic Movement</i>	R A109	SHANA GULATI JEWELRY	R B110	THATCH	C L309	WOODPECKER <i>Showcase Japan</i>	R A319
POKETO <i>Pattern Brands</i>	C K301	SHAQUDA <i>Showcase Japan</i>	R A319	THE COMMONFOLK COLLECTIVE <i>Karen Alweil Studio</i>	R E322	WOOL & INDIGO	R G211
POST HOUSE	R A305	SHORTHAND PRESS	R B209	THE COMPLETIST	R F111	WOOLLY MADE	R C203
PRACTICAL MAGIC <i>Karen Alweil Studio</i>	R E322	SHOWCASE JAPAN	R A319	THE CONSCIOUS	R C307	WOVEN WORLDWIDE <i>BLMAI</i>	C K203
PRETTI.COOL	R G306	SIBILIA <i>Aesthetic Movement</i>	R C101	THE FLORAL SOCIETY <i>Aesthetic Movement</i>	R B107	WRAP	R D206
PRINTFRESH <i>Karen Alweil Studio</i>	R E322	SIDAI DESIGNS	R D322	THE FOUNDATION	R E105	WREN	C K200
PRINTWORKS <i>Aesthetic Movement</i>	R A108	SIERRA WINTER JEWELRY	R F311	THE GLOBAL TRUNK	R F318	WRITE TO ME <i>Karen Alweil Studio</i>	R E322
PROPER TABLE	R B205	SILVA MADE	R E14	THE GOOD TWIN	R B216	YAHAE <i>Showcase Japan</i>	R A319
PUBLIC STONEWARE	R H313	SIN	C L209	THE JACKSONS LONDON	C L306	YAMAZAKI HOME	C K209
PUEBCO	R G317	SIR/MADAM <i>Aesthetic Movement</i>	R E100	THE MODERN HOME BAR	R B207	YELLOW OWL WORKSHOP	R D215
PURE + PLANTED	R NOURISH	SIX BARREL SODA CO. <i>The Foundation</i>	R E105	THE MUNIO	R C208	YELLOWPOP	C K212
QUIRKYDIGS	R G312	SLOANE STATIONERY <i>Karen Alweil Studio</i>	R E322	THE NICE FLEET	R H301	YEN TING CHO	R H303
R.NORMAN X PELO MODERN HAIR	R A1	SLOWTIDE	R E319	THE PLANT LORE AGENCY	R E320	YIELD <i>Pattern Brands</i>	C K301
RABBLE	C J206	SNAP WELLNESS	C K202	THE SOCIAL TYPE	R H206	ZAFFERANO AMERICA	C J202
RAEN <i>Nutty Rice</i>	C M213	SOAPEN	R NOURISH	THE USB LIGHTER COMPANY <i>Karen Alweil Studio</i>	R E322	ZIZIA BOTANICALS	R NOURISH
RAMONA & RUTH	R D203	SOCIETY OF LIFESTYLE <i>Aesthetic Movement</i>	R B100	THIS NIGHT	R G213		
RANGER STATION	R D309	SOIL TO STUDIO	R G207	TRACEY TANNER	R G106		
REBEKAH J. DESIGNS	R G208			TRACIE HERVY CERAMICS	C K210		
				TRAVAUX EN COURS...	R G204		
				TRAVELER'S COMPANY	R D219		
				TREKO CHILE	C M219		
				TRES CUERVOS	R E12		
				TROVELORE	R E316		



RIVERSIDE PAVILION

BY BOOTH NUMBER



ENTER HERE →

CITYSIDE PAVILION

SCAN THE SHOW

A fully-integrated, hybrid experience, the online marketplace is here to make your show days organized and paperless!

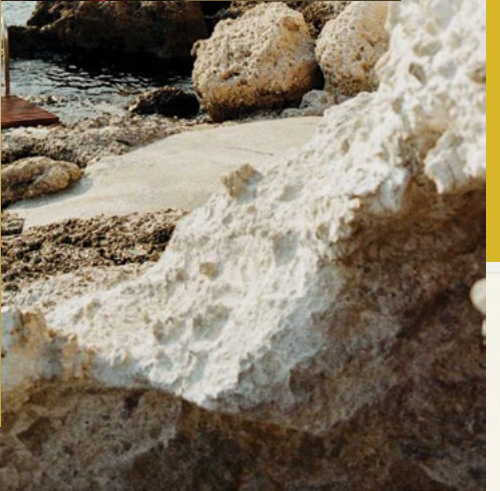


Want a record of all the Exhibitors you were interested in? You can scan their QR codes too! Each brand has a unique code displayed on a sign at their booth. If you are signed into a Shoppe Online account on your device, your phone or tablet's camera will work as the scanner. Save the list of favorites to your Shoppe Online profile page in a section called "Seen at Shoppe Object."

While you're looking, keep an image of your Shoppe Online QR code handy. (It's the same code you used to enter the show!) Exhibitors can scan your code to easily connect post show or place an order with you on the floor if there is interest.



That's the gist! There's also lots more you can do, including favoriting items and following up with brands after the show. Ask at the front desk if you'd like more guidance.

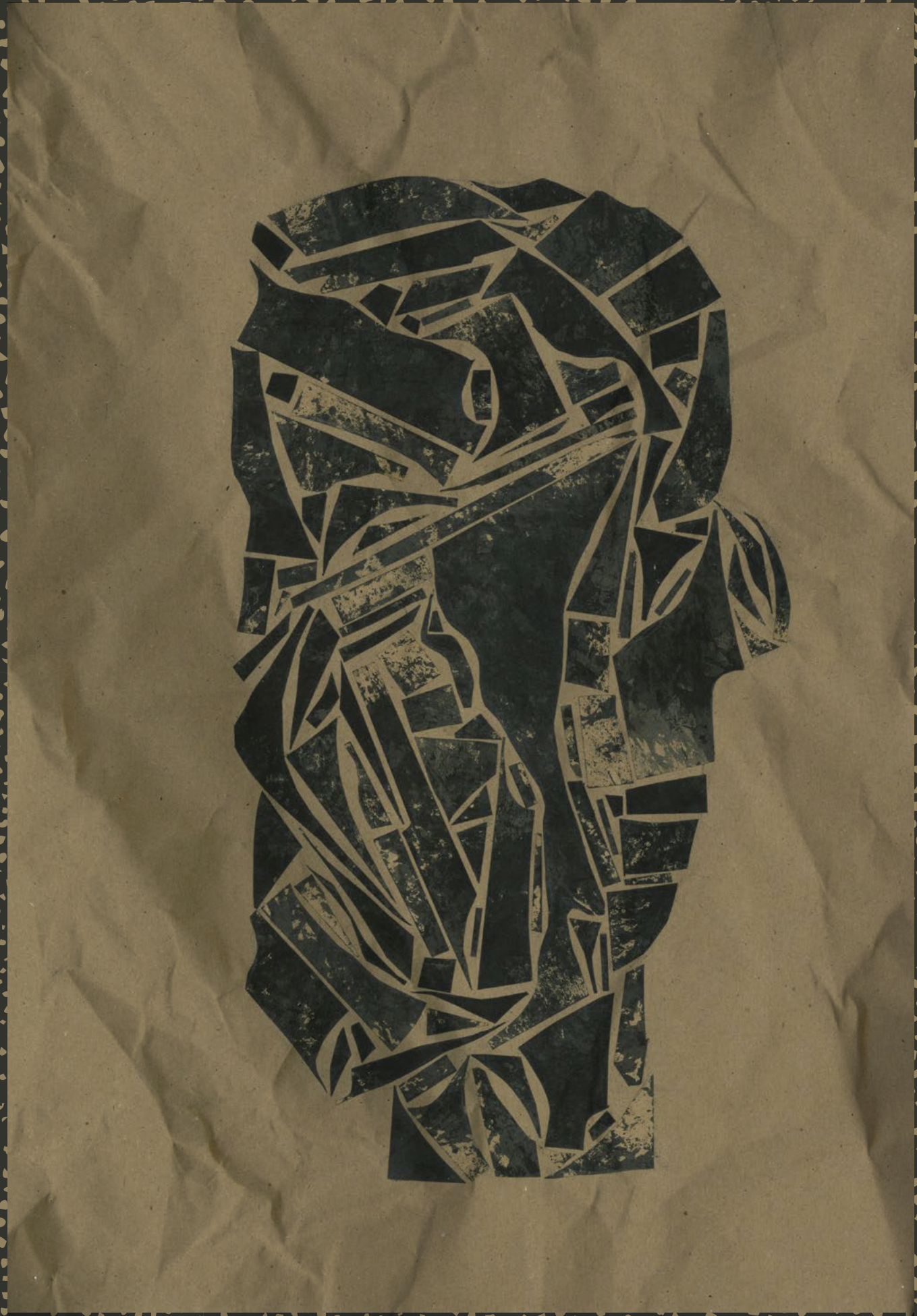


artist of the season:

DARRELL DEAN

A Nashville native who now hails from North Carolina, this winter's Artist of the Season is quite simply a head above the rest. Using materials as diverse as wild berry juice and soy sauce (as well as good old pen and ink) to create his captivating drawings, paintings and collages of heads — always heads — and executed in his signature “bag brown” color palette, Dean is nothing if not prolific, as illustrated by the hundreds of pieces he has on display this market. A purveyor of objects and a lover of oddities, Dean also owns an eponymous antique and decorative arts shop in Winston Salem, where many of his creations are undoubtedly born of the texture, pattern, material, process and juxtaposition of all that surrounds him. Meet Dean and shop his work at the Artist's Lounge in the Riverside Pavilion.







BLACK LIVES MATTER ACTION INITIATIVE

Shope Object's Black Lives Matter Action Initiative seeks to foster a more representative home and gift market by sponsoring a cohort of talented Black designers and business-owners each season. This winter's lines include luxurious, handcrafted hats, bold jewelry, colorful textiles, and more. Get to know the brands here and find them on the show floor (and on Shoppe Online!) to shop their wares.

And find these BLMAI brands on Shoppe Online throughout the winter season:
ADDIS VIV | AYA PAPER CO. | CURED LEAVES TEA | KALEIDADOPE | LOAM CANDLES
OYÁ ABĒÓ | SK+N/MUSE | UNWRP | VELA NEGRA | TI-A WOVEN GOODS

ADJOURN TEAHOUSE | C311

Adjourn Teahouse creates organic tea blends, rooted in the quest for collective liberation through pausing and rest practices.

BATIQUA | G101

Batiqua empowers artisans by sourcing handmade, fairtrade goods from around the world.

EARTH ELEMENTS SOAPWORKS | G311

Kellie Martin founded Earth Elements Soapworks with the non-toxic and highly effective formulations that healed her own skin.

EVE & NICO | C215

Eve & Nico encourages the empowerment of women by creating diverse markets for their artisanal goods.

FRANCES GREY | C210

Frances Grey is a luxury millinery brand handcrafting hats that embody timeless sophistication.

MIMIPAMBO | G212

MimiPambo designs jewelry collections intended to inspire fearlessness and boldness.

NOA LUX | B215

Noa Lux creates self-care tools meant to make adulting a little easier, from crackling-wick candles to luxurious skincare.

SUGAR TAYLOR CO. | J201

SugarTaylorCo.isafamily-runoperationfeaturingcustomtextiles, art prints, and other vibrant creations.

TERMINAL B | M314

Terminal B is a fragrance brand with scents intended to create an olfactory experience of far-flung destinations.

WOVEN WORLDWIDE | K203

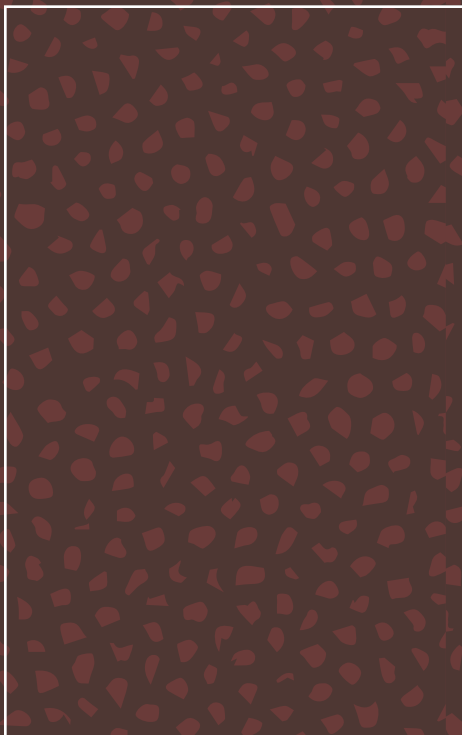
Woven Worldwide specializes in high-quality, eco-credential, handmade baskets.



NOURISH

Curated by Dr. Maria Geyman, *Vogue* contributor and the naturopathic doctor behind Masha Tea, Shoppe Object presents a collection of the latest and greatest in beauty and gourmet. From cult classics to new favorites, this expertly edited selection of pantry and cosmetic goods represents the most innovative, artisanal, and design-forward brands, redefining what it means to be nourished.

Find the Nourish section upstairs on the mezzanine of the Riverside Pavilion.



SHOWCASE JAPAN

We're constantly inspired by the way ancient traditions of craftsmanship meet innovative aesthetics in Japan's thriving home and gift industry. Luckily, we get a front row seat. Showcase Japan presents a selection of 26 exceptional brands, handpicked in partnership with the Japan External Trade Organization, that span categories from traditional pottery to stunning glassware.

Find Showcase Japan in section A319 of the Riverside Pavilion.

GLOBAL ARTISAN PROJECT

Shoppe Object, in partnership with ByHand, has created an exciting new section of the show featuring global, handmade goods. Each of the participating brands are dedicated to preserving craft techniques, supporting artisan communities, and promoting the magical beauty of the handmade.

Find The Global Artisan Project in section A320 of the Riverside Pavilion.



MADE IN IRELAND

We are thrilled to have Made in Ireland joining us again at Shoppe Object. The four incredible brands are showing delicate textiles, rich wools, and workwear-inspired knits. Each company is both distinct and distinctly Irish, representing the country's deep creative heritage and vibrant, contemporary design.

Find Made in Ireland in section E104 of the Riverside Pavilion.



PLAYLIST

A Brooklyn-based music curator specializing in funky pop and R&B, DJK8 returns with a fresh playlist for Shoppe Object's winter show. Here's a dozen of our favorites to accompany your morning commute – fair warning, dancing inevitable. Be sure to follow DJK8 on Instagram, where you can contact her to set the vibe for your next dinner party or your store's daily tunes.

@_DJK8_

GIVING IT IN *Faye Meana*

LULLABY *Grace Ives*

DAME LA FUERZA *Monogem*

BACK POCKET *Vulfpeck*

LOVER *Devendra Banhart*

BAD BEHAVIOUR *Elli Ingram*

THE ONLY REASON *Yuksek, Breakbot, Irfane*

NOMALIZO *Letta Mbulu*

BEST TO YOU *Blood Orange*

BE SWEET *Japanese Breakfast*

LA GRENADE *Carla Luciani*

FLOWERS *Miley Cyrus*

COMPLIMENTARY BREAKFAST

Can't Shoppe on an empty stomach! Enjoy free breakfast at the Shoppe Café (upstairs on the mezzanine of the Riverside Pavilion) before the show starts each morning. Please present your wristband for entry.

EXHIBITORS 8AM-9AM | BUYERS 9AM-10AM

SHOPPE SHUTTLE

Shuttles will travel each day of the show between the Javits Center and Shoppe Object at Pier 36. Shuttles will depart each location approximately on the hour, beginning at Javits at 10AM and beginning at Pier 36 at 11AM. The last shuttles from each location on all three days of the show will be departing at approximately 5PM.

Ask at the front desk if you'd like more info.

THE PARTY BOX

Join us Monday evening for a Shoppe Object party at The Box. Dance under the aerialists to the sounds of our resident DJ, Lucas Walters, in this legendary New York nightclub. We can't wait to see you there!

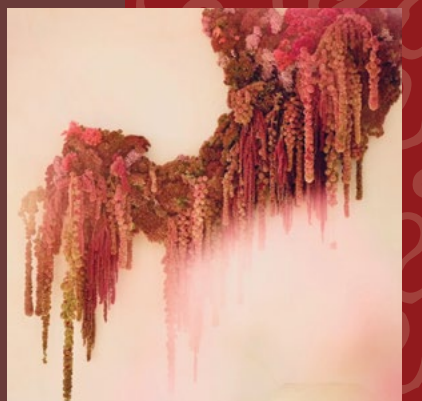
MONDAY, FEBRUARY 6 FROM 7-11PM
THE BOX, 189 CHRYSIE STREET, NYC

All are welcome! Shoppe Object wristband required for entry.

FLOWERPSYCHO

A big thank you to creative studio flowerpsycho for the florals at the show! Be sure to marvel at their arrangements, tag them in your pictures, and find them online to see more of their mesmerizing installations.

FLOWERPSYCHO.COM | @FLOWERPSYCHOS



THE COLOR CONDITION

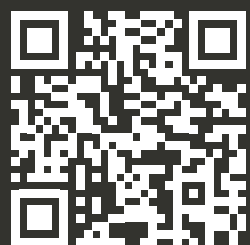
Two friends, Sunny Sliger and Marianne Newsom, collaborate to create vibrant, interactive installations of streamers for galleries, events, public spaces... pretty much anywhere that could use a boost of fun and beauty. Their fascination with color, pattern, and movement has led to experiments with different fabrics, each dancing with the environment in its own way. See their extravagantly lovely work at Shoppe Object's entrance and on their Instagram.

INSTAGRAM @THECOLORCONDITION.

FOOD & DRINK

On the main level of the Riverside Pavilion, find easy options from our partners at Monterone, including sandwiches and soup at the Waterside Cafe by the windows, cocktails at the bar in the Artist's Lounge, and grab-and-go snacks at Cafe Central in The Pass. Carts are also roaming the show floor with small bites and refreshments.

Upstairs on the mezzanine of the Riverside Pavilion, LOVE YOU LIKE is serving up delicious, healthy lunch choices including grain bowls and salads. See their menu via the QR code below.



EAT, SIP, SHOP

We are wishing you the best time while you're in the city; for us that means delicious meals, cocktails with a view, and drifting through inspiring shops. Here are a few of our favorite haunts for all the above – find the full round-up via the QR code below.

CERVO'S

43 Canal Street, New York, NY

An ode to the seafood of the Iberian Peninsula, located in Chinatown. The expertly crafted wine list highlights bottles from coastal Spain and Portugal.



TEMPERANCE WINE BAR

40 Carmine Street, New York, NY

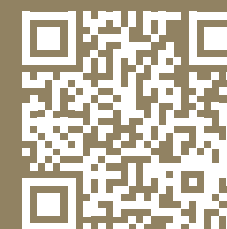
An eclectic neighborhood spot with an award-winning wine list, Temperance offers all 100+ of its wines by the glass, so it's easy to try something new.



BIG NIGHT IN

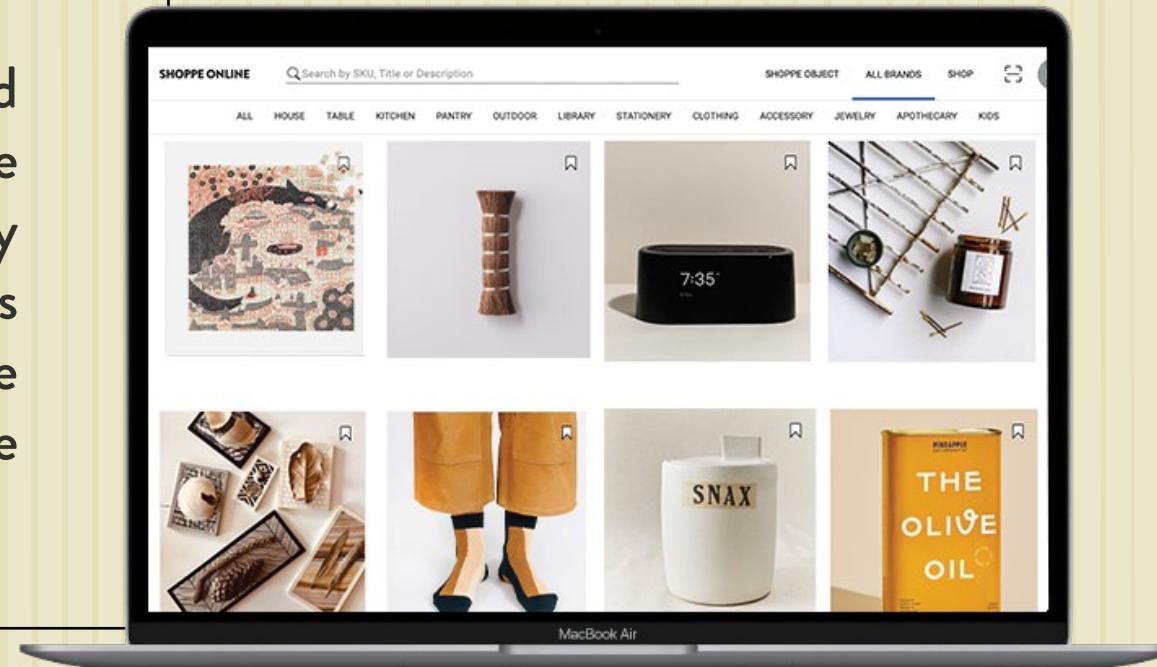
154 Franklin Street, Brooklyn, NY

A small concept store celebrating dinner parties and dining at home. Browse tableware, serving implements, tins and jars of treats and condiments, and gift boxes with all of the above.



SHOPPE ON & ON & ON

The discovery continues all year round on our digital marketplace, Shoppe Online. With the full community available to shop, including hundreds of brands not seen at the show, the marketplace is your go-to resource for curated buying, anytime.



Use Shoppe Online to connect and communicate with brands, find makers you missed at the show, and keep track of old favorites and new finds.

Be sure to sign up for our email list to see editorial emails, gift guides, and handpicked recommendations throughout the year.

We're here to help you plan for your buying needs, suggest products and brands, and bring the best to your customers. Reach out to connect@shoppeobject.com for Buyer support and questions.

